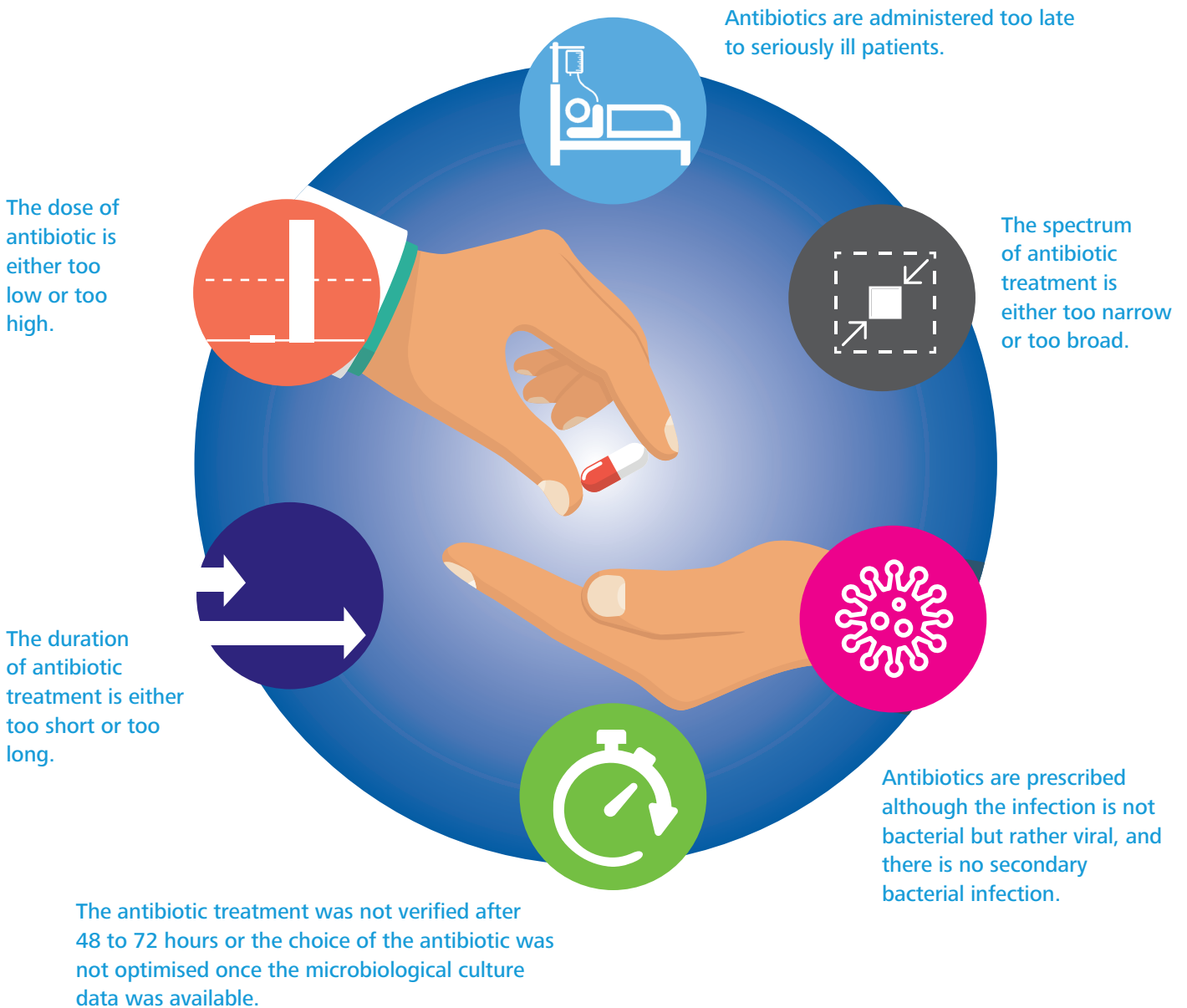




How antibiotic resistance can develop

If you use antibiotics, selection pressure arises, **which can lead to resistance**. It is, therefore, essential to avoid prescribing and using antibiotics **unnecessarily** or **inappropriately**:



Sources:
ECDC. Antibiotics Day (<https://antibiotic.ecdc.europa.eu/en/about>, accessed on 17/08/2020)

(10.20)

